

Small Office Systems

Version V3.10.36: 14 April 2012

Do I need a Server?

Unless you are a single user – or will have two workstations linked together – the answer is YOU SHOULD set up a server system. For a discussion on the question, read the introduction in UserGuide **6.3 Server-based Systems**. To set up a server system requires equipment meeting the specs described in:

<http://www.filemaker.com/products/filemaker-server/server-11-specifications.html>

Setting up a single-user system

Running **iProjects** as a single user is easy – just:

- ❖ Install the current version of FileMaker™ (at this writing, 11.4) (NOTE: Do not use V12 yet – we will have to make changes to iProjects to operate under V12.)
- ❖ Download and install the FileMaker™ plugins (refer to UserGuide **6.1 Initial Installation & Configuration**)
- ❖ Copy the **iProjects** folder to your desktop or hard drive, unzip the **iProjects** folder, and get started – following the configuration instructions in UserGuide 6.1.

Setting up a multi-user (peer-to-peer) system

To set up **iProjects** on a peer-to-peer system, do the following:

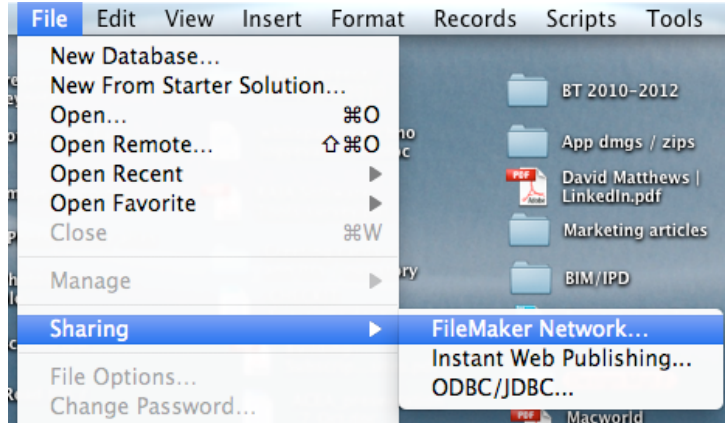
- ❖ Install the current version of FileMaker™ (at this writing, 11.4) on each computer that you wish to use to access **iProjects**. You will need a separate site license for each workstation. (NOTE: Do not use V12 yet – we will have to make changes to iProjects to operate under V12.)
- ❖ Download and install the FileMaker™ plugins (refer to UserGuide **6.1 Initial Installation & Configuration**) on each computer to run the system.
- ❖ Decide which of the computers will be the equivalent of a central server – will host all of the project data. This computer must be running at all times that any of the other users are accessing **iProjects**, and the **iProjects** file must be open. Generally, this should be the fastest, most powerful of the computers in use.
- ❖ Copy the **iProjects** folder to this host computer only, unzip the **iProjects** folder, following the configuration instructions in UserGuide 6.1.
- ❖ Ensure that all computers using the system are linked. A cabled Ethernet linking is the fastest, but a wireless system will work almost as well.

Using a peer-to-peer network system

Using a peer-to-peer system is not difficult, but requires certain login actions by each User:

- ❖ Open FileMaker on each workstation to be linked.

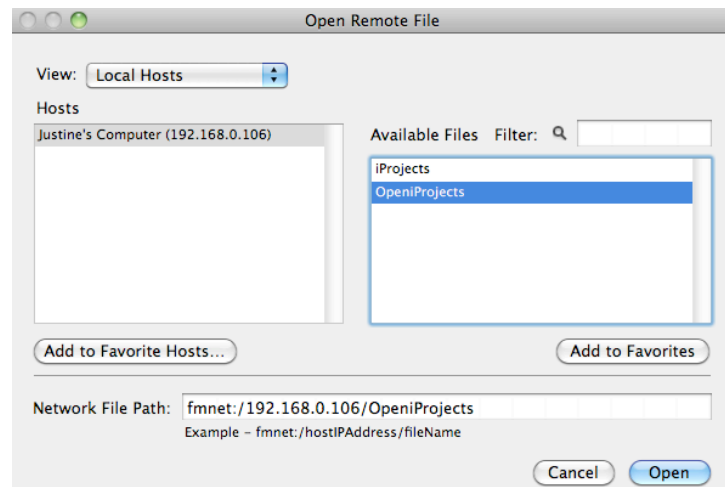
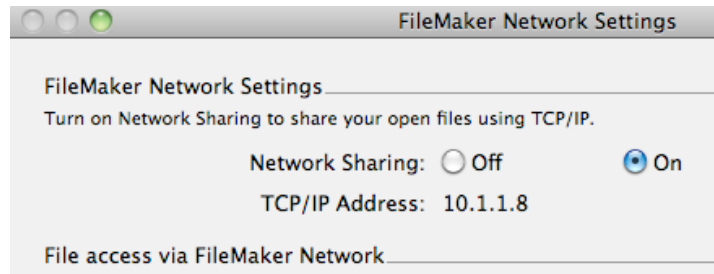
- ❖ Enable Filesharing on each computer intended to access **iProjects**, including the host workstation: File > Sharing > FileMaker Network (see next page for illustrations).



Clicking on FileMaker Network will open the dialog box you see in the graphic right. If Network Sharing is Off, click the On radio button.

(This illustration shows what you will see on a Mac. The view on a PC will be different.)

- ❖ Navigate back to, and Click, the Open Remote button shown above. This will access FileMaker on the host workstation and display all available files, as shown right.
- ❖ Click on OpeniProjects. You will now be working on the system via the host machine.



Multiple users can work on **iProjects** at the same time, but not on the same form or document, if someone else is entering data, you will have to wait until they finish.